

# SHARP®

DX-C310/DX-C311  
DX-C400/DX-C401

POWERFUL PERFORMANCE IN A COMPACT HYBRID DESIGN



"Line of the Year"  
Award 2009



"Pick of the Year"  
Award 2009



"Product of the Year"  
-Sharp Frontier  
Series"  
Award 2009



"Best Color"  
A4 MFP Series"  
Award 2009



"Best Value for Price"  
Color A4 MFP"  
Award 2009



THE RENAISSANCE OF COLOR

POWERFUL PERFORMANCE  
ANYWHERE YOU NEED IT

# powerful

Sharp combines the **SIMPLICITY AND CONVENIENCE** of network printers with the **MULTI-TASKING**

**PRODUCTIVITY** of color MFPs to achieve the best of both worlds. The DX-C310/C311/C400/C401 are exciting examples of the **SHARP FRONTIER DX SERIES**, bringing brilliant color output closer to your

workgroup with a **HYBRID DESIGN** that has a small footprint to fit smaller environments. But these

models aren't small on functionality. The informative color navigation screen simplifies operation by providing an intuitive user interface to keep ahead of today's fast-paced office document distribution

needs. Incorporating next-generation **COMMON CONTROLLER ARCHITECTURE**, the DX Series

provides uniform functionality and operability as found in Sharp's **AWARD-WINNING MFP**

**PRODUCT LINE**. Engineered to help reduce operating costs and downtime, the Frontier DX Series

is easier than ever to set up, monitor, and maintain. These models offer modular expandability,

remote-access capabilities, and a **VALUE-ADDED APPROACH** to network and software integration.

The latest in a long line of innovative products from today's fastest-growing name in office electronics,

they also incorporate Sharp's **AWARD-WINNING Sharp OSA® PLATFORM** and the industry-leading

Sharp security suite to help protect data and control access. In action, their ease and versatility will

change your mind about MFPs. More power, less complexity...that's **WORK WITHOUT LIMITS**.



*Sophisticated hybrid design for versatile setup in countertop or floor-standing console configuration, expandable to 4-tray console with a maximum paper capacity of 2,100 sheets.*

The Sharp Frontier DX Series delivers fast output, superior color quality and compact footprint closer to the workgroup. Advanced and easy to operate features will help maximize performance, improve office efficiency, simplify document workflow and reduce operating expense. Incorporating Sharp's next-generation common controller architecture, these powerful multi-tasking MFPs meet the fast-paced needs of today's modern office.

## PRODUCTIVITY IN ACTION TO SPEED OUTPUT AND STREAMLINE DOCUMENT WORKFLOW

- Vivid color and crisp black-and-white documents can be quickly and accurately produced at speeds up to **31** (DX-C310/DX-C311) or **40** (DX-C400/DX-C401) pages per minute.
- Powerful 800 MHz (DX-C310/DX-C311) and 1 GHz (DX-C400/DX-C401) controller for **true multi-tasking** performance and increased multi-functional productivity.
- **High-Resolution** color display with **informative graphical user interface** that makes advanced copying, printing, scanning and faxing functions easy to use.
  - DX-C311/DX-C401 Touch Display allows users to easily locate, identify and retrieve files using thumbnail preview and image preview modes for fast document storage and retrieval. It also displays previews of incoming and Internet faxes.
  - DX-C310/DX-C400 LCD control panel displays previews of incoming faxes and Internet faxes as well as previews of stored fax data.
- **Optional Inner Finisher** can be added without taking up much additional space. The space-efficient finisher not only provides exceptional productivity but also automates time-consuming tasks such as stapling, sorting and offset stacking.
- **Direct USB Scanning and Printing** provide a whole new level of convenience. It comes in handy for scanning documents directly to a USB memory device and is an easy way to print PDF\* documents.
- The cutting-edge Sharp **Remote Front Panel** feature allows administrators and help desk professionals to access and control the device from a remote PC workstation. This panel can also be used to help facilitate key operator training.



- The optional **Super G3 Fax Kit** with intelligent Inbound Fax Routing delivers lightning-fast faxing for busy workgroups.
- Sharp's powerful **ImageSEND™** technology securely scans documents to up to seven destinations, including: USB devices, network folders, e-mail, fax machines and desktop PCs, at speeds up to 35 images per minute. You get one-touch distribution features that centralize document workflow helping save time and money.
- With **Sharpdesk®** personal document management software, users can easily organize their scanned documents and integrate them into everyday workflow.
- The optional **Business Card Feeder** can automatically feed and scan business cards and is capable of working with commercially available business card scanning software to automate contact database entry.



Front Panel USB 2.0 port for easy access.



Optional Business Card Feeder.



DX-C310 and DX-C400 Color Navigation Panel.

\* PDF Direct Print is standard on DX-C311/DX-C401. Requires MX-PKX5 option for DX-C310/DX-C400.

## INNOVATIVE DESIGN TO SAVE TIME AND MONEY

For years, digital multifunction printer/copiers have added more features and functions.

But functionality can lead to over-complexity. That's why Sharp created the **HYBRID DESIGN** of the

FRONTIER DX SERIES, integrating strategies to help **SIMPLIFY OPERATION, REDUCE COSTS** and

**PROTECT THE ENVIRONMENT**. The new Sharp FRONTIER DX SERIES color MFP models are designed to

make it **EASIER AND FASTER** to set up, operate, control, monitor, manage and maintain. Sophisticated

but intuitive, these models enable even first-time users to operate **PRINTING, COPYING, SCANNING**

**AND FAXING** functions with greater ease and efficiency. These models are engineered for **LOW**

**MAINTENANCE** and **QUICK SERVICEABILITY**. Like traditional MFPs, they incorporate long-life

tri-component supplies consisting of separate toner, developer and drum cartridges, to help **LOWER**

**COST PER PAGE** and **REDUCE TOTAL COST OF OWNERSHIP**. Finally, the DX models are

**ENVIRONMENTALLY-FRIENDLY** in design, engineering and manufacturing. The new models have

been designed with a **STRONG COMMITMENT** to helping to protect the environment. They assist

businesses to reduce energy consumption, minimize waste and recycle toner more easily through

Sharp's **TONER RECYCLING PROGRAM**.



# innovative



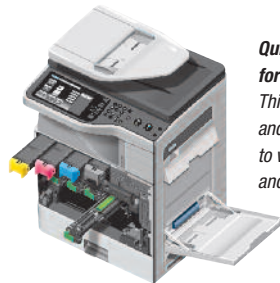
## USER-FRIENDLY, ECO-FRIENDLY OPERATION TO HELP SPEED WORK, PROLONG LIFE AND REDUCE COST

- By utilizing a long-life **tri-component supplies** system consisting of individual toner, developer and drum cartridges, the working life of developer and drums is significantly prolonged—and consumables yield can be up to **six times higher** than that of typical mono-unit consumable systems.
- Sharp encourages customers to make use of the **Toner Recycling Program** that provides a pre-paid shipping label for returning used Sharp toner cartridges to our recycling facility. Learn more at: [www.sharpusa.com/recycle](http://www.sharpusa.com/recycle).
- In replenishing supplies, **downtime is virtually eliminated** to lower operating costs—and waste is reduced because the drums and developers are **used to their maximum life**.



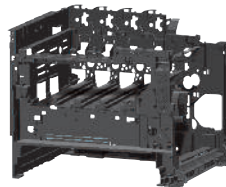
The Sharp FRONTIER DX SERIES is designed to minimize service requirements and maximize uptime. These models employ long-life, quick-replace cartridges to help extend supplies replenishment intervals and dramatically reduce downtime. Maintenance is trouble-free, with clean and simple replacement of supplies and machine maintenance procedures that can be performed quickly and easily.

- Supplies can be replenished with **no mess and no tools required**. Maintenance parts such as: primary transfer belt, transfer roller, fuser, paper feed rollers and document feed rollers are also designed for quick, tool-free replacement.
- Power consumption on these DX models are among the lowest in its class. These models comply with the Energy Star™ Program and the RoHS program to minimize energy consumption and the use of chemicals and materials that can harm the environment.
- Built on a sophisticated and **rugged unibody frame**, the Frontier DX Series is constructed to absorb vibration, reduce operating noise, and consistently produce superior image quality.
- Sharp's **second-generation micro-fine toner technology** and new developer combine to reduce graininess, produce clear reproduction of fine lines and halftone colors, and offer a lower consumption rate than conventional toner. The result is breathtaking image quality, less packaging materials and longer replacement intervals.
- Environmental leadership is a long tradition at Sharp. In 2007, we received the **Green Contractor Award** and the **Evergreen Award** from the U.S. government in recognition of our overall commitment to environmentally-friendly products, services, manufacturing procedures and for our recycling and waste reduction practices. For more information, please visit [www.sharpusa.com/environment](http://www.sharpusa.com/environment).



### **Quick Replace Cartridges for Easy Maintenance**

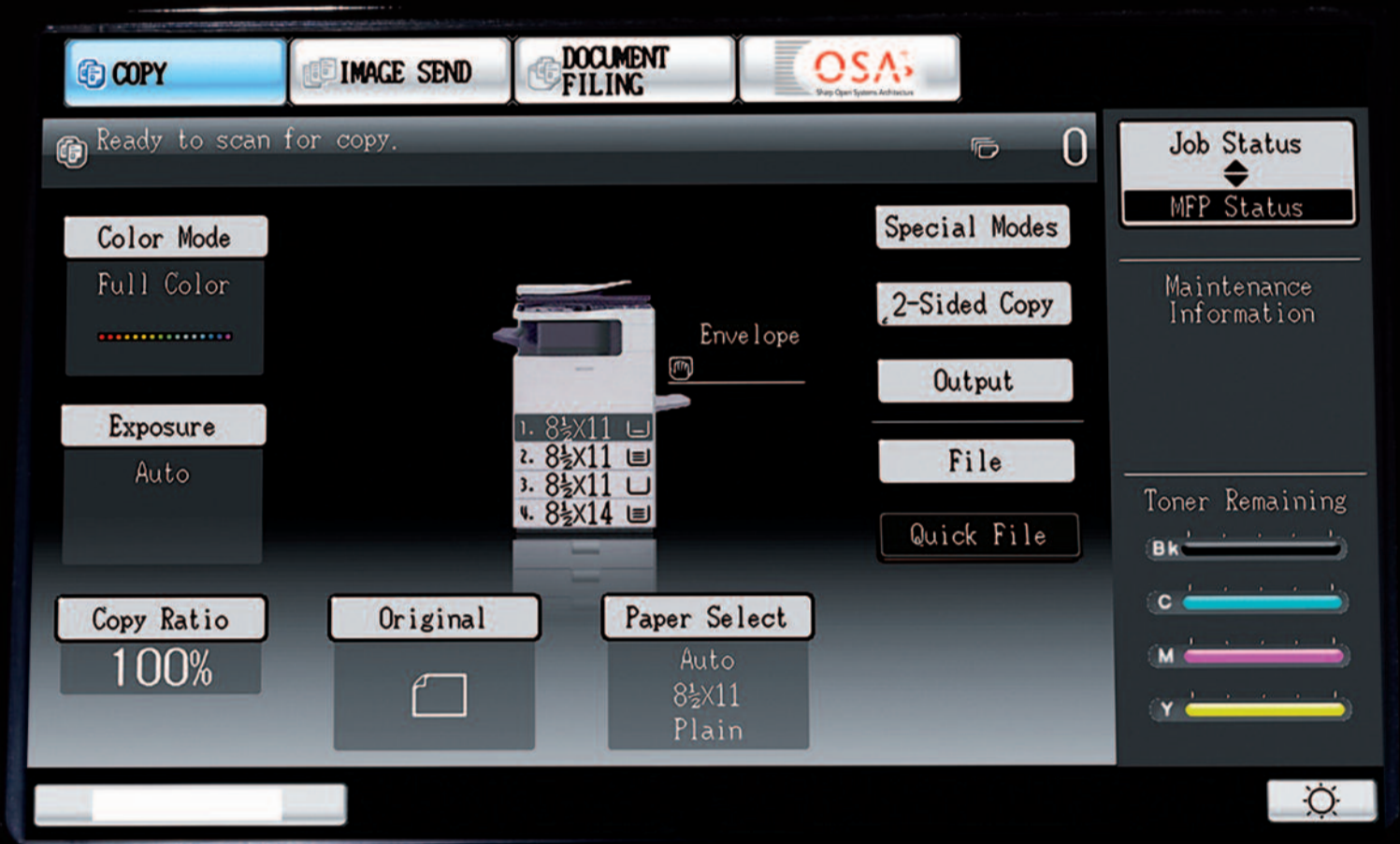
*This design makes service and general maintenance easier to virtually eliminate downtime and enhance productivity.*



### **Highly-Rigid Main Frame**

*Helps better protect and isolate critical machine components.*

# navigation



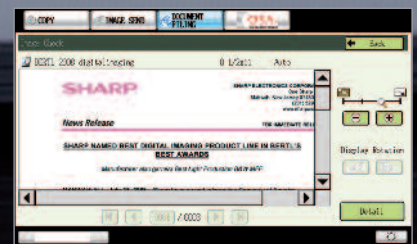
## Image Send Screen

Easy to use interface lets you quickly select, change & view scanning settings right from the panel.



## Thumbnail Previewing\*

Quickly & easily locate, retrieve & print filed documents and stored faxes in full color.



## Image Check\*

Ability to view & check the image quality of stored files. Easily zoom, rotate and scroll.

\*Available on DX-C311/DX-C401 only.

Above screen captures are taken from the DX-C311/DX-C401 8.5" LCD.

## SIMPLE OPERATION WITH TOTAL CONTROL OVER INPUT, OUTPUT AND DOCUMENT ACCESS

The Frontier DX Series incorporates a high-resolution color display that's **SO EASY TO USE, IT HELPS EVERY USER**

**BE MORE PRODUCTIVE.** For workflow intensive environments, the Sharp DX-C311 and DX-C401 models feature an

**8.5" WIDE-SCREEN COLOR TOUCH-DISPLAY WITH** intuitive graphical user interface. For less demanding

applications, the Sharp DX-C310 and DX-C400 models feature a brilliant **4.3" LCD COLOR NAVIGATION PANEL**

making it easy to process complex color print jobs and deliver documents in less time.



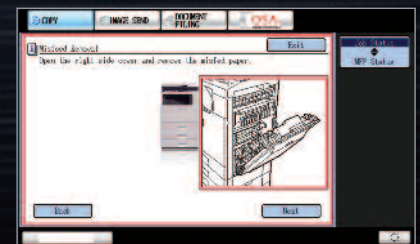
### On-Screen Keyboard

Easily enter data such as e-mail addresses and file names using its on-screen keyboard or connect an external keyboard to its USB port.



### Job Status

Display the status of all print, copy, scan & fax jobs waiting in queue. Can't wait for a copy? Instantly prioritize your job.



### Error Recovery

Easily rectify problems following on-screen, illustrated step-by-step prompts.

Above screen captures are taken from the DX-C311/DX-C401 8.5" LCD.

## PERSONALIZED AND VERSATILE APPLICATION INTEGRATION



### Sharp OSA® technology at a glance

- Automate tasks and save time with seamless integration between the Frontier DX Series and network applications
- Centralized applications minimize set-up and installation on multiple Sharp products
- Virtually eliminates repetitive tasks and streamlines workflow, increasing efficiency
- Maximize your return on investment with tighter integration among IT assets
- Industry standard programming leads to faster deployment of new solutions

Today's multifunction products must be versatile enough to handle fast-changing system requirements and security demands. For Sharp, that's a given—but we've gone much further.

Designed for today's mobile and flexible workplace, the Frontier DX Series supports the

**AWARD-WINNING SHARP OSA** development platform. This **3RD GENERATION**

**TECHNOLOGY** delivers unparalleled efficiency, control and convenience. With **SEAMLESS**

**INTEGRATION**, Sharp OSA-developed applications provide a window into your business

applications, so you can access what you need, when you need it, right from the touch panel.

With the ability to **PERSONALIZE APPLICATIONS** and processes specific to your business,

Sharp OSA technology can help eliminate redundancy and streamline workflow. Utilizing

**INDUSTRY STANDARD NETWORK PROTOCOLS**, such as **XML** and **SOAP**, Sharp OSA

technology allows these MFPs to communicate with many different applications. As your

integration and workflow needs change, count on Sharp's scalable technology to

help **KEEP YOU AHEAD.**

# versatile



"Best Development  
Platform-Sharp OSA®  
Technology" Award 2008

The exchange of digital documents in the 21st century creates new challenges for network security. Sharp has developed an award-winning, multi-layered security system to help protect valuable information and maintain employee confidentiality. No company has more experience in maintaining digital security—so corporate end-users and IT professionals can count on the proven safeguards of the Frontier DX Series.

## PROVEN PROTECTION FOR CONFIDENTIAL DATA, DEVICE ACCESS AND NETWORK SAFEGUARDS



### Authority Group and Access Control

Advanced account management enables administrators to set authority groups for access to features of the Frontier DX Series. Administrators can control which department, for instance, has full access to color copying, printing, scanning and/or faxing. Walk up users enter a code, Local Name and Password, or LDAP User Authentication to access their features assigned to their group. Users can also login utilizing a human interface device (HID) such as a Smartcard or Common Access Card (CAC).\*



### Data Erase and Encryption

To help protect your data, the Frontier DX Series offers an optional data security kit that encrypts document data using **AES** (Advanced encryption standard) **encryption**. Additionally, the data security kit erases the temporary memory on the hard drive by overwriting the encrypted data up to seven times, offering an unprecedented level of assurance.



### Control Device Access Over the Network

To help restrict access to the device over the network, the Frontier DX Series offers IPsec, SMB and extended support for **SSL Encryption** (Secure Sockets Layer), **IP/MAC address filtering**, IEEE 802.1x authentication, protocol enable/disable and port management for maximum security.



### Documents Remain Confidential

To help protect your printed documents from unauthorized viewing, the Frontier DX Series offers encrypted PDF files for printing and scanning as well as **Confidential Printing** that requires users to enter a PIN code in order to print a queued document. Additionally, **Secure Fax Release** ensures received fax documents are held in memory until an authorized user enters a PIN code. So compliance with healthcare regulations such as HIPAA is easier.



### Network Scanning Access

To help protect your network from unauthorized e-mail communications, the Frontier DX Series supports **User Authentication**, requiring users to login before performing any network scanning operations.

### Tracking and Auditing Information

Legislation and industry policies require companies to be more aware of information flow from their offices. Sharp offers both built-in and additional hardware/software which allows users to control, access and track usage of each device on the network.

These scalable security offerings aim to protect your intellectual property, preserve confidential information and help your business to meet regulatory requirements, such as the Health Insurance Portability and Accountability Act (HIPAA), and the Gramm Leach Bliley Act (GLB). For additional information visit: [www.sharpsusa.com/security](http://www.sharpsusa.com/security)



"Most Secure MFP  
Range" Award—6  
Years 2004-2009



\* Some features require optional equipment.

DEVICE MANAGEMENT  
MAXIMIZES PRODUCTIVITY AND CONTROL

# manage



**SHARP**

**The Sharp 24/7 Training Advantage**  
To make managing your new Frontier DX Series document systems simple and easy, ask your local Authorized Sharp Dealer about My Sharp, a dedicated customer-care website that offers solutions, resources and information specific to your new Sharp product.

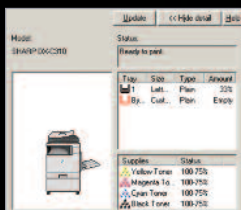
Sharp's Frontier DX Series combines integrated, user-friendly software with robust device management technology to help IT professionals manage usage, control costs and minimize downtime. To maximize opportunities while reducing document and support costs, office environments must **MANAGE DOCUMENT WORKFLOW** with greater intelligence. The Sharp **ADMINISTRATION UTILITY SUITE** is designed to do just that. It allows administrators to **MANAGE DEVICES** more efficiently. They can remotely manage the set-up, configuration, device settings and more! The convenience of an Embedded Web Page gives users advanced **WEB-BASED MANAGEMENT TOOL** of network scanning, profiles and web-links—while administrators can access device settings, color controls, account information and security settings to help **SAVE TIME** and **IMPROVE PRODUCTIVITY**. Sharp's device management system lets you **TAKE CHARGE** of color usage and costs. A new **REMOTE FRONT PANEL** feature allows help desk professionals and support personnel to view and control the device's LCD Panel remotely from any authorized networked PC. Our Printer Status Monitor lets network users **VIEW PRINTER CONDITIONS** and check paper and toner levels right from the workstation. Powerful and Intuitive **SHARPEDESK® SOFTWARE** enables individuals **GREATER CONTROL OF SCANNED DOCUMENTS**.



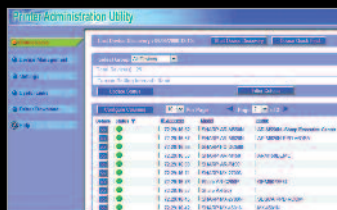
"Best Device  
Management &  
Integration Technology"  
for MFP Series



"Outstanding  
Network Device  
Management Utility"



Printer Status Monitor



Printer Administration Utility



Embedded Web Page



Remote Front Panel

# DX-C310/C311/C400/C401 SPECIFICATIONS

## Main Specifications

<b>DX-C310/DX-C311</b>	Includes multi-tasking controller, 80 GB HDD, PCL® 5c/PCL 6,
<b>DX-C400/DX-C401</b>	Postscript® 3 (Optional in DX-C310/DX-C400), network printing, network scanning, 50-sheet RSPF, auto-duplex, 500-sheet paper drawers and 100-sheet bypass. Black and color developer, drum and starter toner cartridges are included in the box.
<b>Type</b>	Color multi-function digital document system
<b>Functions</b>	Copy, print, network print, network scan, document filing and fax¹
<b>LCD</b>	DX-C311/DX-401: 8.5" W-VGA Color Touch Panel DX-C310/DX-400: 4.3" Q-VGA Color Display
<b>Copy System</b>	Dry electrostatic transfer/Dual component developer/Magnetic brush development/OPC drums/Heat Roller fusing/Xenon Lamp Exposure
<b>Originals</b>	Sheets and Bound Documents
<b>Max Original Size</b>	8-1/2" x 14"
<b>Copy Size</b>	Min 5-1/2" x 8-1/2"/Max 8-1/2" x 14"
<b>Copy Speed</b>	DX-C310/DX-C311: 31 ppm B&W/Color (Letter) DX-C400/DX-C401: 40 ppm B&W/Color (Letter)
<b>Multiple Copy</b>	Max: 999 copies
<b>First Copy Time</b>	Platen glass: 8.0 sec or less (B&W); 8.9 sec or less (color) RSPF: 9.9 sec or less (B&W); 11.5 sec or less (color) (Based on A4 original using tray 1*)
<b>Warm-Up Time</b>	90 seconds or less*
<b>Magnification</b>	50% to 200% in 1% increments (50 to 200% for RSPF)
<b>Original Feed</b>	50-sheet RSPF
<b>Scan Speed</b>	Copy mode (Simplex): Up to 35 ipm (B&W or color) @ 600 X 300 dpi. Network Scan (Simplex): Up to 35 ipm (B&W or color) @ 200 x 200 dpi.
<b>Original Sizes</b>	5-1/2 x 8-1/2 / 8-1/2 x 14 (15-lb bond to 110-lb index)
<b>Paper Feed System</b>	Standard: 500 sheet paper drawer (letter/legal) and 100-sheet bypass tray (letter/legal). Optional: Up to 3 additional 500-sheet paper drawers (letter/legal)²
<b>Paper Types</b>	Paper drawers: 16-28 lb. bond. Other paper types include: plain, pre-printed, recycled, pre-punched, letterhead, and color paper. Bypass Tray: 16-28 lb. bond (plain paper), 15-16 lb. (thin paper), 28 lb. bond-110 lb. index (heavy paper), 20-24 lb. (Monarch/Com-10 envelope). Other types include label paper, gloss paper, pre-printed, recycled, pre-punched, letterhead, color film and OHP Film.
<b>Duplexing</b>	Standard automatic duplex copying and printing
<b>CPU</b>	DX-C310/DX-C311: Power QUICCIII-MPC8533E/800MHz DX-C400/DX-C401: Power QUICCIII-MPC8533E/1,000MHz
<b>Interface</b>	RJ-45 Ethernet (10Base-T/100Base-TX/1000Base-T), USB 2.0 (Host Port), USB 2.0 (Device Port)
<b>Memory</b>	Standard: DX-C311/DX-C401: 1GB Standard: DX-C310/DX-C400: 512MB
<b>Hard Disk Drive</b>	80 GB
<b>Copy Resolution</b>	Scan: B&W/Color: 600 dpi; Copy output: B&W/Color 600 dpi
<b>Color Modes</b>	Auto Color Control, Full Color Mode, Monochrome (B&W), 2 Color Mode, Single Color Mode.
<b>Exposure Control</b>	Modes: Automatic (Color: Magical View, B&W: Character AE) Text, Text/Photo, Text/Printed-Photo, Printed-Photo, Photo, Map, Pale-Color document. Settings: Auto exposure control or 9 step manual exposure.
<b>Halftone</b>	256 gradations/2 levels (monochrome)
<b>Copy Features</b>	Scan-Once-Print-Many, electronic sorting, Integrated offset-stacking, Auto Color Sensing (ACS), Auto Paper Sensing (APS), Auto Magnification Sensing (AMS), Auto tray switching (ATS), rotation copy, reverse copy, margin shift, edge erase, OHP insertion, card shot, reverse image, black-white reversal, centering, proof copy (DX-C311/DX-C401), 2-in-1, photo repeat, document filing (DX-C301/ DX-C401), job programs, date/character/page stamp (color)
<b>Account Control</b>	Up to 1000 users. Supports user-number authentication (on device), login name/management, date/character/page stamp (color), copy, print, scan, fax and document management
<b>Output Tray Capacity</b>	Main output tray (top) 250 sheets (face down)
<b>Firmware Management</b>	Flash ROM with local (USB); network update capability and firmware update 1 to N with PAU (Printer Administration Utility)
<b>Configuration Method</b>	Web-based management system with user/administrator level login security, cloning (1 to N) with PAU and Remote Front Panel Access
<b>Service/Maintenance</b>	Remote Front Panel Access to service logs and click counts

<b>Power</b>	AC 100-127VAC, 60Hz, 12 AMPS
<b>Power Consumption</b>	Maximum: 1.44kW or less.
<b>Weight</b>	DX-C311/DX-C401: Approx. 101.4 lbs. DX-C310/DX-C400: Approx. 101.4 lbs.
<b>Dimensions</b>	DX-C310/DX-C400: 22-3/64" (W) x 17-1/4" (D) x 28-7/64" (H) DX-C311/DX-C401: 22-3/64" (W) x 19-13/32" (D) x 28-7/64" (H)

## Network Printing System (Standard)

<b>PDL</b>	PCL5c, PCL 6, PostScript 3 (Optional in DX-C310/DX-C400) compatible, optional XPS
<b>Resolution</b>	1200 dpi, 600 dpi
<b>Print Speed</b>	DX-C310/DX-C311: 31 ppm B&W/Color (letter) DX-C400/DX-C401: 40 ppm B&W/Color (letter)
<b>Print Drivers</b>	Windows® 98, Windows ME, Windows NT® 4 (with SP5 or later), Windows 2000, Windows Server® 2003, Windows Server 2008, Windows XP, Windows XP x64, Windows Server x64, Windows Vista®, Windows Vista x64, MAC OS® 9.2.2, OSX (including 10.2.8, 10.3.9, 10.4.11, 10.5-10.5.1), all MAC PPD. Windows Server 2008 x 64
<b>Features</b>	Continuous printing, duplex printing, pamphlet printing, N-up printing, image rotation, different cover page/last page, transparency inserts, carbon copy print mode, fit-to-page, poster print, margin shift, mirror image, watermarks, overlay, confidential print, confidential batch print, print hold, bypass printing, job priority printing and direct printing. (Note: Some features not available on certain print drivers)
<b>Direct Printing¹</b>	File Types: TIFF, JPEG, PCL, PRN, TXT, PDF, Encrypted PDF, Postscript and XPS. Methods: FTP, WebPage, E-mail and USB Memory
<b>Resident Fonts</b>	80 Outline Fonts
<b>Interface</b>	RJ-45 Ethernet 10/100/1000 Base-T
<b>Operating Systems</b>	Windows 98, ME, NT4.0, 2000, XP, 2003/2008 Server, Vista, Novell® Netware® 3x, 4x, 5x, MAC OS-9.0, MAC OS-X, Sun® OS 4.1x, Solaris® 2 x, Unix®, Linux®, Citrix® (Metaframe, Presentation Server 4, 4.5) and Windows Terminal Services
<b>Network Protocols</b>	TCP/IP (IPv4, IPv6, IPSEC) SSL (HTTP, FTP, FTPS), SNMPv3, 802.1x for Windows and Unix. LPD and LPR for UNIX. IPX/SPX® for Novell environments. EtherTalk® and NetBEUI, AppleTalk for Macintosh® environments.
<b>Printing Protocols</b>	LPR, IPP, IPPS, PAP, Raw TCP (port 9100), FTP and Novell Pserver/Rprinter
<b>Network Security</b>	IP/Mac address filtering, protocol filtering, port management, user authentication and document administration.
<b>Security Standards</b>	IEEE 2600-2008, DoD (NSTISSP) #11, DoD Directive 8500.2, DoD (DISA)

## Network Scanning Systems (Standard)

<b>Max Original Size</b>	8-1/2" x 14"
<b>Optical Resolution</b>	600 dpi
<b>Output Modes</b>	600 dpi, 400 dpi, 300 dpi, 200 dpi, 100 dpi
<b>Scan Modes</b>	Color, monochrome, grayscale
<b>Image Formats</b>	Monochrome: TIFF, PDF, Encrypted PDF, XPS¹ Color: Grayscale, Color TIFF, JPEG, PDF, Encrypted PDF, XPS¹ Internet Fax: TIFF-FX, TIFF-F, TIFF-S¹
<b>Image Compression</b>	Monochrome Scanning: Uncompressed, G3 (MH), G4 (MR/MMR) Color/Grayscale: JPEG (high, middle, low) Internet Fax mode: MH/MMR (option)
<b>Scan Destinations</b>	E-mail, Desktop, FTP, Folder (SMB), USB, Internet fax (option), Super G3 fax (option)
<b>One-Touch Destinations</b>	Up to 999 (combined scan destinations)
<b>Group Destinations</b>	Up to 500
<b>Programs</b>	48 (combined)
<b>Max. Jobs in Memory</b>	Up to 94
<b>Network Protocols</b>	TCP/IP and SSL (Includes HTTP, SMTP, LDAP, FTP, POP3), SMB, ESMTP and 802.1x
<b>Network Security Software</b>	E-mail server user authentication for LDAP and Active Directory Sharpdesk® desktop document management software (1 user license)

## B&W Super G3 Fax Kit (Option)

<b>Transmission Mode</b>	Super G3, G3
<b>Modem Speed</b>	33.6 KBPS³
<b>Compression Methods</b>	JBIG, MMR, MR, MH

<b>Scanning Method</b>	Sheet fed simplex or duplex or book
<b>Max Transmit Resolution</b>	400 dpi
<b>Transmit Speed</b>	Approximately 2 seconds with Super G3/JBIG⁴
<b>Auto Dialing</b>	Up to 999 (combined scan destinations)
<b>Group Dial/Destinations</b>	Up to 500
<b>Inbound Fax Routing</b>	Forwards received fax data to E-mail, FTP, Desktop, SMB
<b>Long Length Originals</b>	Up to 19.5" (for transmission)
<b>Programs</b>	48 (combined)
<b>Memory</b>	8 MB (Exclusive)
<b>Halftone</b>	256 levels
<b>Features</b>	Quick on-line transmission, direct transmission, F-Code transmission/reception, rotate transmission, anti-junk fax reception, automatically staple received faxes, secure fax release, out of paper memory reception, auto redial, duplex reception transaction reports, activity reports and PC Fax.

## Inner Finisher (Option)

<b>Type</b>	Build in Finisher
<b>Output Capacity</b>	Up to 280 sheets (letter/legal), 100 postcard, 20 envelope
<b>Output Delivery</b>	Face down
<b>Stapling Media</b>	Plain/Thin/Heavy/Recycled/Letterhead/Pre-punched/Colored/Preprinted paper
<b>Stapling Positions</b>	Single corner position
<b>Power Source</b>	Supplied from the main unit
<b>Stapling</b>	30 sheets letter/legal
<b>Stapled Sets</b>	10 bundles or 300 sheets (letter/legal)
<b>Weight</b>	Approx 19.8 lbs.
<b>Dimensions (When Tray is expanded)</b>	18.67" (w) x 13.07" (d) x 6.18" (H) 20.5" (w) x 13.07" (d) x 6.18" (H)

## Optional Equipment⁵

<b>MX-FN12</b>	Inner Finisher
<b>MX-CFABB</b>	Base Plate with locking casters
<b>MX-CFABD</b>	Deluxe Cabinet with door and locking casters
<b>MX-CSX1</b>	500 sheet Paper Feed Unit for Tray 2
<b>MX-CSX2</b>	500 sheet Paper Feed Unit for Trays 3 & 4
<b>MX-PKX5</b>	Postscript 3 Kit (for use with DX-C310/DX-C400)
<b>MX-PUX1</b>	XPS Expansion Kit (Requires MX-SHP1GBXPS)
<b>MX-SHP1GBXPS</b>	Expansion Memory 1 GB (Required for MX-PUX1)
<b>AR-PF1</b>	Bar Code Font Kit
<b>MX-FR13U</b>	Commercial Data Security Kit (for use with DX-C311/DX-C401)
<b>MX-FR12U</b>	Commercial Data Security Kit (for use with DX-C310/DX-C400)
<b>MX-FXX3</b>	Fax Expansion Kit
<b>MX-FWX1</b>	Internet Fax Expansion Kit
<b>MX-AMX1</b>	Application Integration Module
<b>MX-AMX2</b>	Application Communication Module
<b>MX-AMX3</b>	External Accounting Module
<b>MX-USX1</b>	Sharpdesk 1 License Kit
<b>MX-USX5</b>	Sharpdesk 5 License Kit
<b>MX-USX10</b>	Sharpdesk 10 License Kit
<b>MX-USX50</b>	Sharpdesk 50 License Kit
<b>MX-USA0</b>	Sharpdesk 100 License Kit
<b>MX-BTX1</b>	Business Card Feeder

## Supplies

<b>DX-C40NTB</b>	Black Toner Cartridge
<b>DX-C40NTC</b>	Cyan Toner Cartridge
<b>DX-C40NTM</b>	Magenta Toner Cartridge
<b>DX-C40NTY</b>	Yellow Toner Cartridge
<b>MX-C40NVB</b>	Black Developer
<b>MX-C40NVC</b>	Cyan Developer
<b>MX-C40NVM</b>	Magenta Developer
<b>MX-C40NVY</b>	Yellow Developer
<b>MX-C40NRB</b>	Black Drum Cartridge
<b>MX-C40NRS</b>	Color Drum Cartridge
<b>MX-C31U1</b>	Primary Transfer Belt Unit
<b>MX-C31U2</b>	Secondary Transfer Roller Unit
<b>MX-C31FU1</b>	Fusing Unit (120V)
<b>MX-C31HB</b>	Toner Collection Container
<b>MX-SCX1</b>	Staple Cartridge (3 cartridges per carton)

\* May vary depending on product configuration, machine settings and operating and/or environmental conditions.

¹ Some features require optional equipment

² Paper capacity is based on letter size paper

³ Actual transmission time will vary based on line conditions

⁴ Based on Sharp Standard Test Chart with approximately 700 characters, letter size in standard resolution

⁵ Some optional equipment may require dealer installation



# reliability

**SHARP**®

SHARP ELECTRONICS CORPORATION  
Sharp Plaza, Mahwah, NJ 07495-1163  
1-800-BE-SHARP • [www.sharpsusa.com](http://www.sharpsusa.com)

Design and specifications subject to change without notice. Sharp, Sharp OSA, Sharpdesk, My Sharp, and all related trademarks are trademarks or registered trademarks of Sharp Corporation and/or its affiliated companies. Windows, Windows NT, Windows Server and Windows Vista are trademarks or registered trademarks of Microsoft Corporation. All other trademarks are the property of their respective owners.